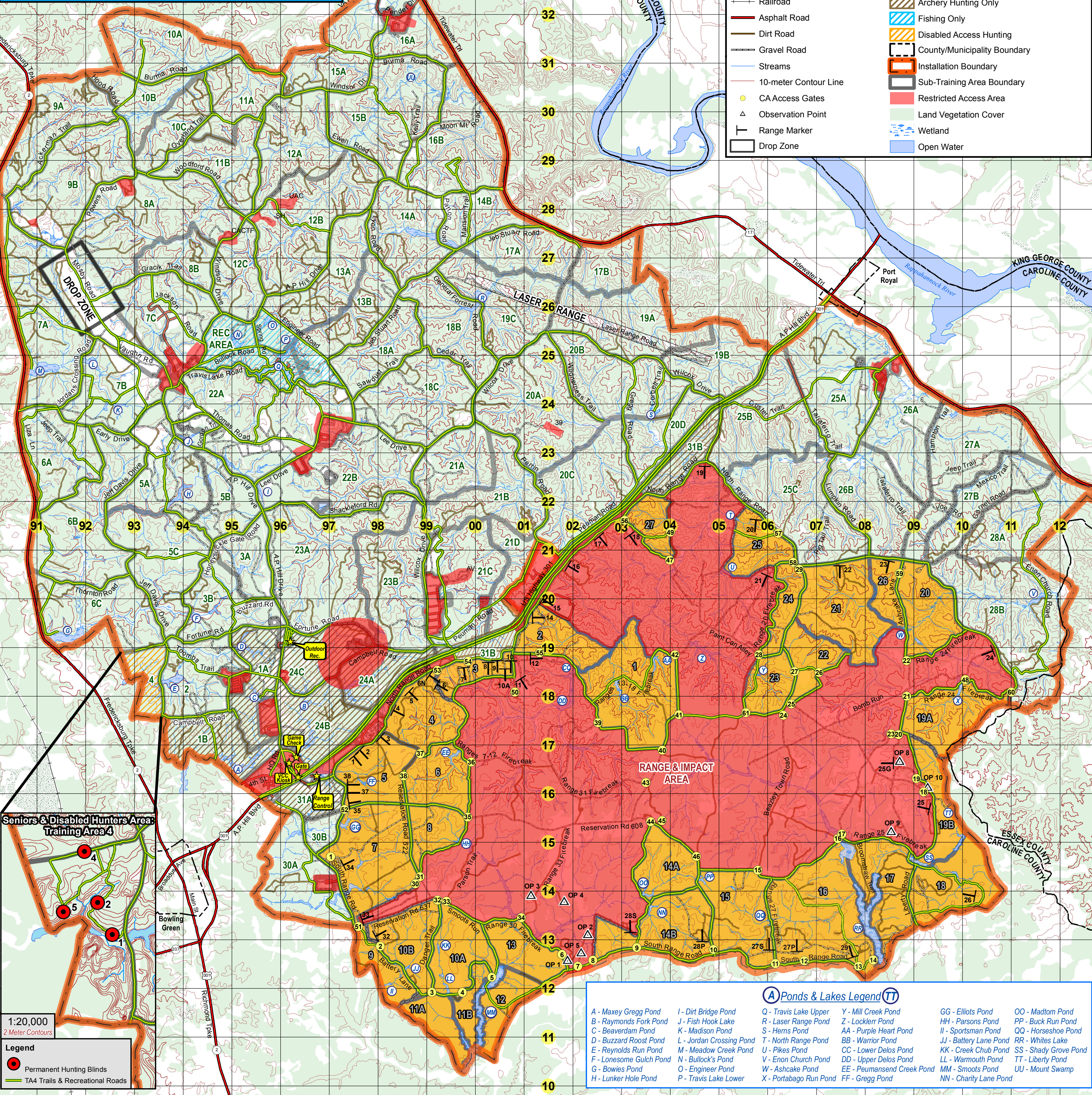


# Fort A.P. Hill 2014 Recreational Use Map

Recreational Use Only

### Legend

- Approved Recreational Roads
- Railroad
- Asphalt Road
- Dirt Road
- Gravel Road
- Streams
- 10-meter Contour Line
- CA Access Gates
- Observation Point
- Range Marker
- Drop Zone
- CA Hunting Only (CA Qualified Hunters Only)
- Archery Hunting Only
- Fishing Only
- Disabled Access Hunting
- County/Municipality Boundary
- Installation Boundary
- Sub-Training Area Boundary
- Restricted Access Area
- Land Vegetation Cover
- Wetland
- Open Water



1:20,000  
2 Meter Contours

### Legend

- Permanent Hunting Blinds
- TA4 Trails & Recreational Roads

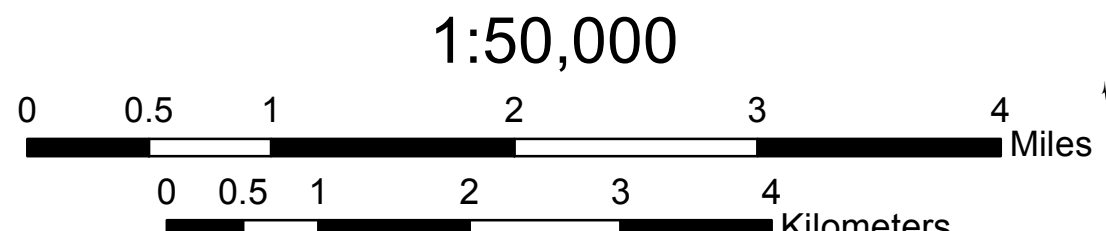
### (A) Ponds & Lakes Legend (TT)

A - Maxey Gregg Pond	I - Dirt Bridge Pond	Q - Travis Lake Upper	Y - Mill Creek Pond	GG - Elliotts Pond	OO - Madtom Pond
B - Raymonds Fork Pond	J - Fish Hook Lake	R - Laser Range Pond	Z - Locklerr Pond	HH - Parsons Pond	PP - Buck Run Pond
C - Beaverdam Pond	K - Madison Pond	S - Hems Pond	AA - Purple Heart Pond	II - Sportsman Pond	QQ - Horseshoe Pond
D - Buzzard Roost Pond	L - Jordan Crossing Pond	T - North Range Pond	BB - Warrior Pond	JJ - Battery Lane Pond	RR - Whites Lake
E - Reynolds Run Pond	M - Meadow Creek Pond	U - Pikes Pond	CC - Lower Delos Pond	KK - Creek Chub Pond	SS - Shady Grove Pond
F - Lonesome Gulch Pond	N - Bullock's Pond	V - Enon Church Pond	DD - Upper Delos Pond	LL - Warmouth Pond	TT - Liberty Pond
G - Bowies Pond	O - Engineer Pond	W - Ashcake Pond	EE - Peumansend Creek Pond	MM - Smoots Pond	UU - Mount Swamp
H - Lunker Hole Pond	P - Travis Lake Lower	X - Portabago Run Pond	FF - Gregg Pond	NN - Charity Lane Pond	

### Municipality

County: Caroline  
Towns: Bowling Green  
Port Royal  
County: Essex  
County: King George  
County: Spotsylvania

Map Edited:  
July 2014



Declination  
is -10.5  
as of  
July of 2013

## Important Phone Numbers

Range Control.....(804) 633-8224 Outdoor Recreation.....(804) 633-8244  
 DES Emergency.....(804) 633-8911 Game Wardens.....(804) 633-8434  
 DES Non-Emergency.....(804) 633-8888 OR (804) 633-8454  
 Biologists / Game Check.....(804) 633-8984 Visitor Control Center (VCC).....(804) 633-8580  
 Sportsman Phone.....(844) 326-3113 Fort A.P. Hill Advisory Line.....(804) 633-8600  
 Sportsman Web <http://faph.sportsman.net> (Weather / Emergency Closure Info)

