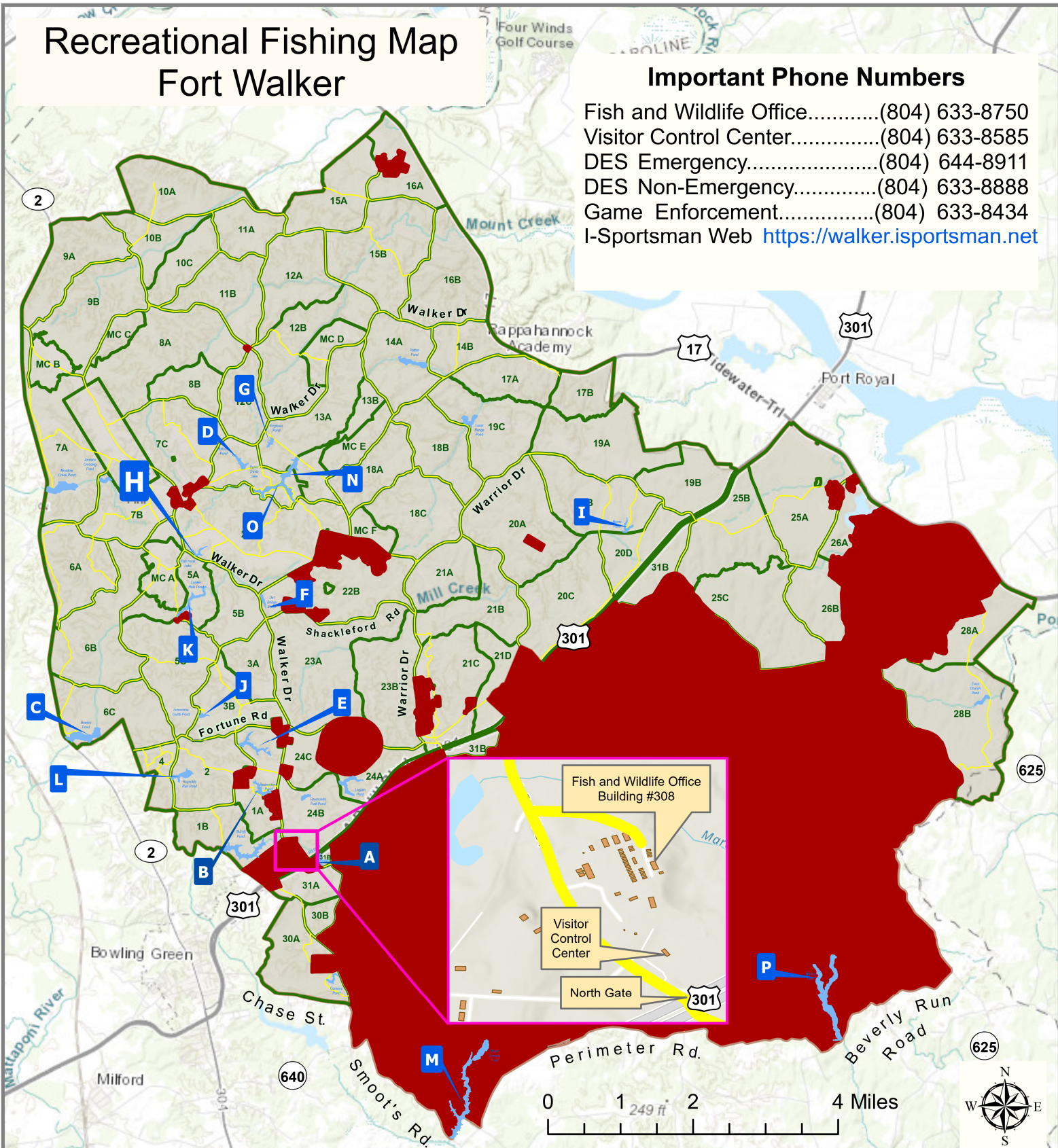


Recreational Fishing Map Fort Walker

Important Phone Numbers

Fish and Wildlife Office.....(804) 633-8750
 Visitor Control Center.....(804) 633-8585
 DES Emergency.....(804) 644-8911
 DES Non-Emergency.....(804) 633-8888
 Game Enforcement.....(804) 633-8434
 I-Sportsman Web <https://walker.isportsman.net>



Ponds and Lakes

Map Features

- | | | |
|-----------------------------------|----------------------------------|--|
| A - 301 Pond.....6 ac | I - Hern's Pond.....5 ac | — Yellow — Approved Recreational Roads |
| B - Beaverdam Pond.....9 ac | J - Lonesome Gulch Pond..6 ac | — Blue — Ponds and Lakes |
| C - Bowie's Pond.....30 ac | K - Lunker Hole Pond.....7 ac | — Red — No Access |
| D - Bullocks Pond.....8 ac | L - Reynold's Run Pond.....12 ac | — Green — Training Area Boundaries |
| E - Buzzard's Roost Pond....15 ac | M - Smoot's Pond.....46 ac | |
| F - Dirt Bridge Pond.....4 ac | N - Travis Lake Lower.....15 ac | |
| G - Engineer Pond.....4 ac | O - Travis Lake Upper.....22 ac | |
| H - Fish Hook Lake.....5 ac | P - White's Lake.....73 ac | |